

2024 EDITION



# PRODUCT CATALOG

INDOOR, OUTDOOR, & SPECIALTY LED PANELS



# CONTENT

Our meticulously curated catalog offers a comprehensive overview of our innovative product range, designed to elevate your visual experiences and exceed your expectations. Explore our world of LED displays, and immersive technologies, all crafted with precision and passion.



## LOCATIONS ..... 03

With a presence in key locations across the nation, we're committed to delivering exceptional service, innovation, and support to your doorstep. Discover the proximity and convenience of our locations, ensuring that your vision is brought to life seamlessly, wherever you are.



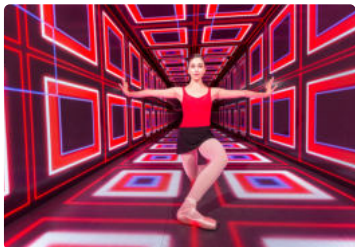
## INDOOR LED ..... 05

Step into a world of brilliant displays with Matrix Visual's Indoor LED solutions. Our cutting-edge technology transforms any interior into a canvas for vibrant visuals, impactful messaging, and unforgettable experiences.



## OUTDOOR LED ..... 12

Transform open spaces and outdoor venues into captivating spectacles with Matrix Visual's Outdoor LED displays. Designed to withstand the elements while delivering breathtaking clarity, our solutions redefine outdoor visuals.



## SPECIALTY LED ..... 15

From curved screens that fit seamlessly into any environment to customized LED creations that bring your vision to life, our Specialty LED collection empowers you to redefine possibilities. Explore the extraordinary, and let your creativity shine with Matrix Visual.



## LED CALCULATOR ..... 19

From curved screens that fit seamlessly into any environment to customized LED creations that bring your vision to life, our Specialty LED collection empowers you to redefine possibilities. Explore the extraordinary, and let your creativity shine with Matrix Visual.



# LOCATIONS

---

Our meticulously curated catalog offers a comprehensive overview of our innovative product range, designed to elevate your visual experiences and exceed your expectations. Explore our world of LED displays, and immersive technologies, all crafted with precision and passion.



# LOCATIONS



## ORANGE COUNTY - THE CALIFORNIA COAST

With over 25,000 ft<sup>2</sup> of warehouse space, our main Fullerton office is perfectly located to serve the Orange County, Los Angeles, San Francisco and San Diego area. The facility features a state of the art LED repair department, a full size quality control station, as well as a purpose built showroom to test and exhibit the latest in LED technology.

📍 1050 E Valencia Drive Fullerton, CA 92831



## NASHVILLE - MUSIC CITY

21,000 ft<sup>2</sup> of warehouse space, a 30ft ceiling and 4 loading docks. That's what you can expect from our latest facility to date. Located 10 minutes from Nashville airport, the Nashville office is ideally located to serve one of the most iconic area in world entertainment.

📍 2737 Couchville Pike Nashville, TN 37217



## LAS VEGAS - NEON CITY

We couldn't be more excited about our new warehouse opening in Las Vegas. This city is renowned for its vibrant entertainment industry and growing economy, making it an ideal location for Matrix Visual to establish its presence with a brand new state-of-the-art facility.

📍 4670 W Silverado Ranch Blvd Suite 110, Las Vegas, NV 89141

## FUTURE LOCATIONS

As our company grows, we are constantly exploring new opportunities for expansion and future locations. We carefully evaluate each potential site based on various factors such as market demand, accessibility, and operational feasibility. Our goal is to select locations that not only meet our business needs but also provide value to our customers and the community.

We are committed to maintaining transparency and open communication with our clients throughout this process and welcome any feedback or suggestions they may have. Our priority is to ensure that our future locations align with our mission and values while also delivering exceptional products and services to our customers.



# INDOOR LED

---

Step into a world of brilliant displays with Matrix Visual's Indoor LED solutions. Our cutting-edge technology transforms any interior into a canvas for vibrant visuals, impactful messaging, and unforgettable experiences.

# INDOOR LED



## ROE GRAPHITE - 2.6MM

Graphite allows for large indoor LED walls with minimal added weight.

- Processor: Brompton
- Dimensions: 500x500  
500x1000
- Extremely light weight.
- Perfect for large walls, ceiling, or even raked angles.
- Light weight, curvable, easy maintenance, high brightness

[DOWNLOAD SPEC SHEET >](#)



## ROE BLACK PEARL - 2.8MM

Black Pearl is a high-performance LED with user-friendly design balance.

- Processor: Brompton
- Dimensions: 500 x 500
- Tile frames made of magnesium alloy
- Each module stores calibration and operating parameters individually.
- True to content effects are displayed with high refresh rates, great color processing, and outstanding contrast ratios

[DOWNLOAD SPEC SHEET >](#)



## ROE CARBON - 3.7MM

Build large LED walls fast & safely. Its light weight makes it the perfect partner for concerts trade shows.

- Processor: Brompton
- Dimensions: 600x600 & 600x1200
- Ultra-lightweight carbon
- High resolution for incredible visual displays
- Convex or concave curve options
- Half panel option

[DOWNLOAD SPEC SHEET >](#)

# INDOOR LED

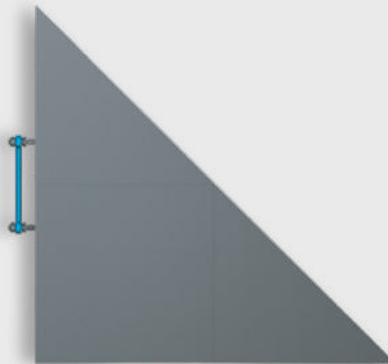


## ROE BLACK PEARL - 3.9MM

Small pixel-pitch, extreme visual quality, and reliable for incredible indoor application.

- Processor: Evison
- Dimensions: 500x500
- Tile frames made of magnesium alloy heat is kept to a minimum
- Maintenance is a breeze with push-out module and identical design to the Black Onyx

[DOWNLOAD SPEC SHEET >](#)



## ROE BP - 3.9MM - TRIANGLE

Don't be square! Bring these creative pieces to the stage or mix them with BP 3.9mm for a unique design.

- Processor: Evison
- Dimensions: 500x500 / 707.1 diagonal
- Tile frames made of magnesium alloy alongside ROE design process
- Each module within a panel stores calibration and operating parameters separately
- Available for all applications (Left, Right, Top, Bottom)

[DOWNLOAD SPEC SHEET >](#)



## ROE BM FLOOR - 4.7MM

This high-end floor panel brings creativity to the greatest concerts, TV studios, & trade shows.

- Processor: Brompton
- Dimensions: 609.6x609.6
- Strong anti-scratch surface
- Quick, easy, and creative set up
- 140° angle view for optimal use from close and afar

[DOWNLOAD SPEC SHEET >](#)



# INDOOR LED

NEW



## INFiLED DB - 2.3 MM

DB Series elevates fine pixel pitch and exclusive contrast technology.

- Processor: Novastar
- Dimensions: 500 x 500
- Fast locking system for rapid construction
- High refresh rate, grey scale, and contrast
- Convex and concave curving

[DOWNLOAD SPEC SHEET >](#)



## INiFLED X-SERIES FLEX-2.9MM

The X-Series Flex offers versatile LED solutions for dynamic visual experiences.

- Processor: Novastar
- Dimensions: 500x500
- Two-way curvable LED panel
- Angle adjustment is easy and fast
- Bend angle can reach up to 20° with 5 incremental levels.
- Patented one-action locking mechanism with positioning pins.
- Magnetic connection from panel-to-panel.

[DOWNLOAD SPEC SHEET >](#)



## INFiLED FLOOR SERIES - 5.9MM

INFiLED's Floor Series offers high-res LED solutions for interactive floors and immersive displays.

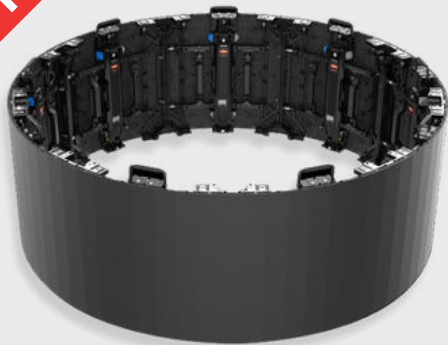
- Processor: Novastar
- Dimensions: 500x500
- Super fast and easy leveling and alignment
- High contrast, anti-reflective and anti-slip surface for uniform blacks at wide viewing angles
- Integrated motion sensors can respond to onscreen movement

[DOWNLOAD SPEC SHEET >](#)



# INDOOR LED

NEW



## UNILUMIN UPAD IV-S

Unilumin UPAD IV-S combines advanced tech with user-friendly design for captivating displays.

- Dimensions: 500 mm x 500 mm x 80 mm
- Compatible Splicing Solution Dimensions: 500 x 500
- 9 angle adjustment gears for a single cabinet with  $\pm 40^\circ$  curve range
- Ultra HD Display Effect
- Cabinet Curve Range Adjustment
- ABS Technology

DOWNLOAD SPEC SHEET >

NEW

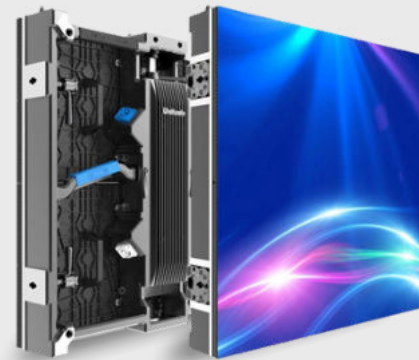


## UNILUMIN UPAD IV-C

UPAD IV-C offers cutting-edge clarity and vivid visuals for captivating viewer experiences.

- Processor: Novastar
- Dimensions: 500x500
- Light weight, easy handling
- Low loss
- Brilliant Visual Performance
- Multiple scenarios, creative display

DOWNLOAD SPEC SHEET >



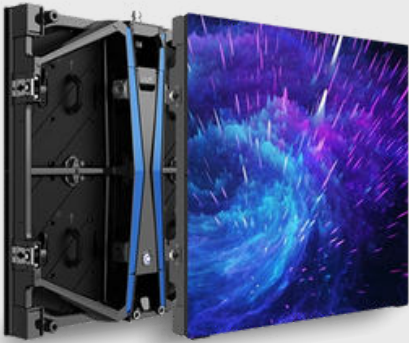
## UNILUMIN UPAD III - 2.6MM

The standard in high-end LED panels. Available as a single tile or as an LED corner package.

- Processor: Novastar
- Dimensions: 500 x 500
- Panel supports both convex & concave curving installation
- Rear-accessible and magnetic module design
- Modular designed power supply and receiving card
- Corner option available

DOWNLOAD SPEC SHEET >

# INDOOR LED



## UNILUMIN UPAD IV - 2.6MM

Experience the future of captivating visual brilliance with the Unilumin UPAD IV – 2.6mm

- Processor: Novastar
- Dimensions: 500×500
- Automatic lock design. Enables one engineer to finish installation
- Mobile control solution, 4K in hand
- ultra lightweight design

DOWNLOAD SPEC SHEET >



## Unilumin UTILE - 3.9MM

Unilumin UTILE in 3.9mm offers exceptional visual clarity and versatile design.

- Processor: Novastar
- Dimensions: 500×500
- Die casting aluminum cabinet with seamless assembling design
- High refresh rate, grey scale and contrast ratio
- Easy to transport and install with tool-free fast assembly design

DOWNLOAD SPEC SHEET >



## UNILUMIN UPAD III CORNER – 2.6MM

Unilumin UPAD III Corner – 2.6mm is an innovative corner and edge LED solution for dynamic displays.

- Processor: Novastar
- Dimensions: 500 x 500 per tile 1000 x 500 when assembled
- Strong anti-scratch surface
- Quick, easy, and creative set up
- 140° angle view for optimal use from close and afar

DOWNLOAD SPEC SHEET >

# INDOOR LED

NEW



## AOTORM-1.5MM

The RM series is featured with simple structure, lightweight cabinet, fast assembly, and high reliability.

- Processor: Brompton
- Dimensions: 500x500
- High refresh rate  $\geq 7680\text{Hz}$
- Concave and convex installations
- Lightweight Structure
- Mini LED Technology
- Due to the use of IMD packaging technology, the products are extremely stable and reliable.

DOWNLOAD SPEC SHEET >



## AOTO CLDRS MINI-1.5MM

Ultra high contrast, good uniformity, and are more reliable and robust than standard SMDs.

- Processor: Brompton
- Dimensions: 600 x 337.5
- 170° viewing angle makes it perfect for tradeshow activations
- Mini LED pods are more resistant than standard SMD's
- Ultra high contrast offers near perfect visual quality

DOWNLOAD SPEC SHEET >



## ABSEN X5-5.2MM

Absen presents brilliant LED visuals with clarity and a versatile design to suit various display needs.

- Processor: Novastar
- Dimensions: 562.5x562.5
- Fully sealed weatherproof construction
- Easy to install and dismantle with smart adjustable locks
- Cross rental friendly with embedded auto-match calibration

DOWNLOAD SPEC SHEET >



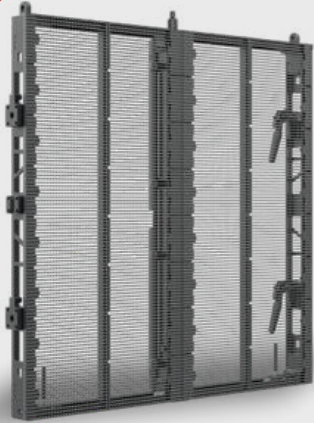


# OUTDOOR LED

Transform your outdoor spaces into captivating displays with our Outdoor LED Collection. Whether it's for outdoor advertising, events, or architectural enhancements, our high-quality LED screens are designed to deliver stunning visuals even in various weather conditions. Embrace the power of dynamic and eye-catching displays to make a lasting impression in outdoor settings.

# OUTDOOR LED

NEW



## ROE VANISH - 8.9MM

Make Your Outdoor Event Standout. Curvable & Transparent outdoor LED panel.

- Processor: Brompton
- Dimensions 1000x1000
- 50% Transparency
- 10 degree Convex or Concave curve
- Brightness: 4000 nits

[DOWNLOAD SPEC SHEET >](#)



## ROE CARBON - 5.7MM

Build large LED walls quickly and safely with its lightweight design, ideal for concerts and touring.

- Processor: Brompton
- Dimensions: 600x600 & 600x1200
- Ultra-lightweight carbon
- Touring frame for mixed and heavy use
- Indoor/outdoor versatility
- Convex or concave curve options
- Half panel option

Options: Touring Cart, Air Frames, T4 - Touring

[DOWNLOAD SPEC SHEET >](#)



## ROE CARBON - 8.3MM

Take touring to the next level with incredible brightness, and blowthrough creative options.

- Processor: Evision / Brompton
- Dimensions: 600x600 & 600x1200
- Blowthrough design for added creativity
- Touring frame for mixed and heavy use
- Indoor/outdoor versatility
- Convex/concave curve options
- Half panel option

Options: Touring Cart, Air Frames, T4 - Touring

[DOWNLOAD SPEC SHEET >](#)

# OUTDOOR LED

**NEW**

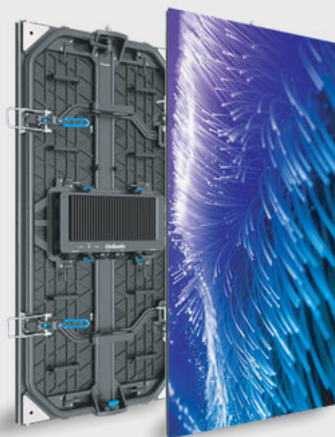


## INFILE ORAR 3.91 CC

Exceptional clarity and vibrant visuals, making it a top choice for captivating displays.

- Processor: Novastar
- Dimensions:  
500 x 500  
500 x 1000
- High refresh rate  $\geq 7680\text{Hz}$
- Concave and convex installations
- Lightweight Structure
- Mini LED Technology
- Due to the use of IMD packaging technology, the products are extremely stable and reliable.

[DOWNLOAD SPEC SHEET >](#)

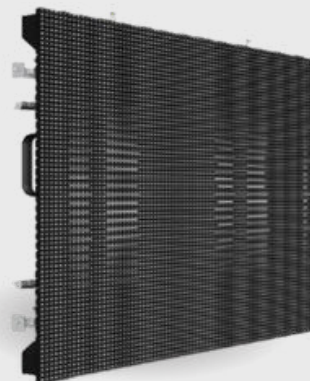


## UNILUMIN URM - 3.9MM

Elevate Your Outdoor Event. Curvable indoor/ outdoor LED panel.

- Processor: Novastar
- Dimensions:  
500 x 500  
500x1000
- Dual use LED tile for indoor & outdoor events
- 15 degree Convex or Concave curve
- Built in curve brackets

[DOWNLOAD SPEC SHEET >](#)



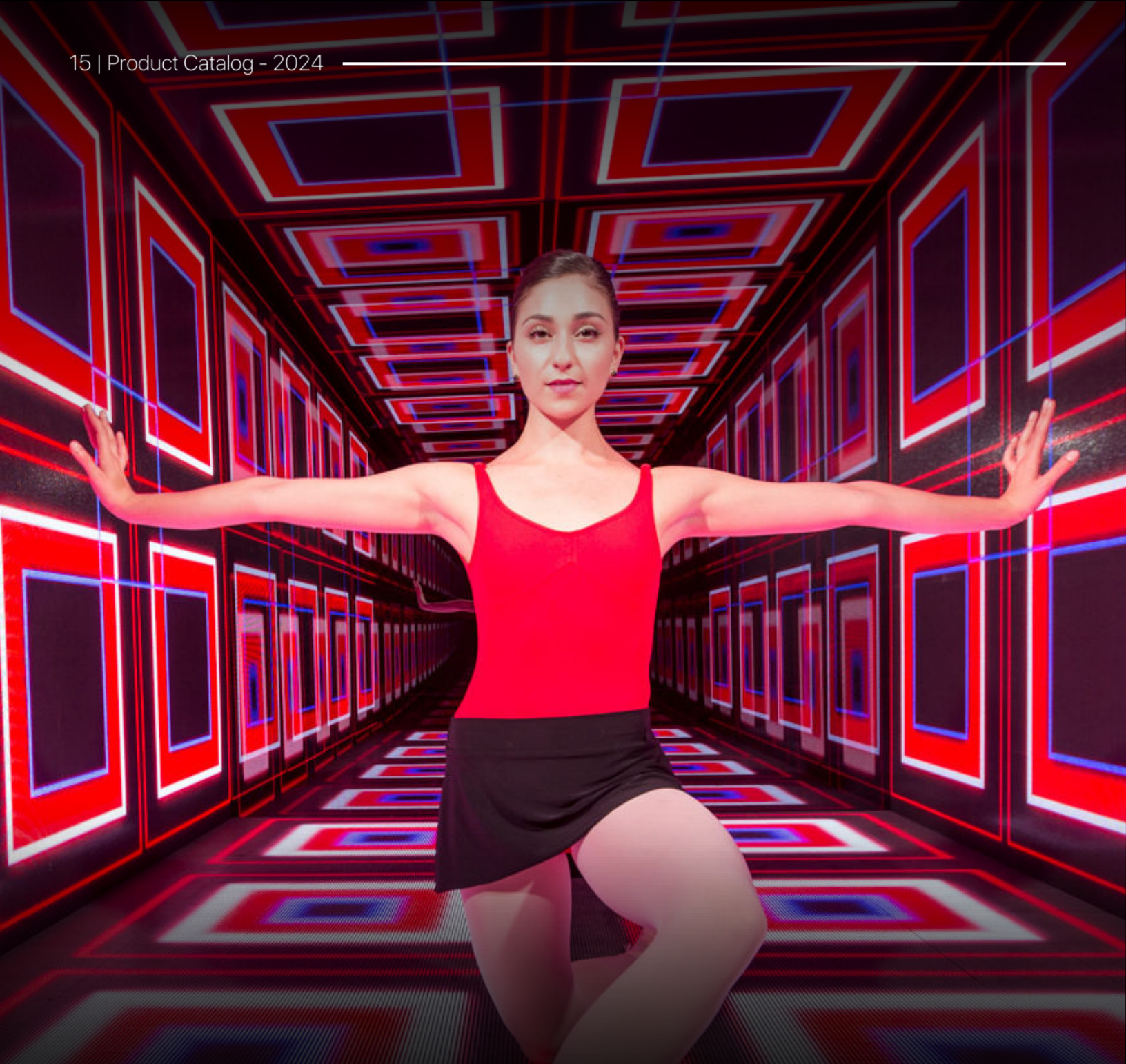
## ABSEN C7-7.5MM

Versatile and high-quality LED solution for dynamic visual experiences.

- Processor: Novastar
- Dimensions: 600x600
- Easy to install and dismantle while being super slim and light weight
- Noise free technology
- Same cabinet size with different pixel pitches can be assembled together seamlessly

[DOWNLOAD SPEC SHEET >](#)





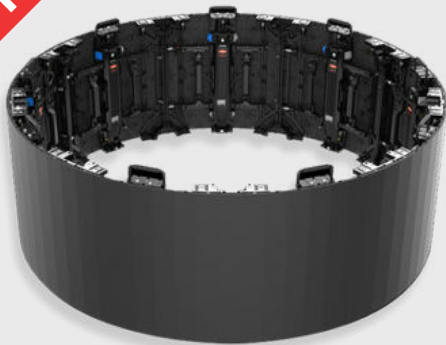
# SPECIALTY LED

---

Discover our Specialty LED Collection, a range of innovative LED solutions tailored to meet unique and specialized lighting requirements. From flexible and customizable displays to cutting-edge LED technologies, our specialty LEDs offer limitless possibilities to illuminate your creativity.

# SPECIALTY LED

NEW



## UNILUMIN UPAD IV-S

Unilumin UPAD IV-S combines advanced tech with user-friendly design for captivating displays.

- Dimensions: 500 mm x 500 mm x 80 mm
- Compatible Splicing Solution Dimensions: 500 x 500
- 9 angle adjustment gears for a single cabinet with  $\pm 40^\circ$  curve range
- Ultra HD Display Effect
- Cabinet Curve Range Adjustment
- ABS Technology

[DOWNLOAD SPEC SHEET >](#)

NEW



## UNILUMIN UPAD IV-C

UPAD IV-C offers cutting-edge clarity and vivid visuals for captivating viewer experiences.

- Processor: Novastar
- Dimensions: 500x500
- Light weight, easy handling
- Low loss
- Brilliant Visual Performance
- Multiple scenarios, creative display

[DOWNLOAD SPEC SHEET >](#)


## UNILUMIN UPAD III CORNER-2.6MM

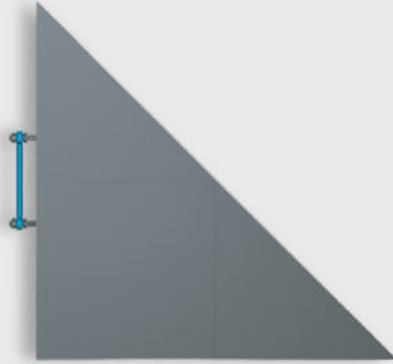
Unilumin UPAD III Corner - 2.6mm is an innovative corner and edge LED solution for dynamic displays.

- Processor: Novastar
- Dimensions:
  - 500 x 500 per tile
  - 1000 x 500 when assembled
- Strong anti-scratch surface
- Quick, easy, and creative set up
- 140° angle view for optimal use from close and afar

[DOWNLOAD SPEC SHEET >](#)



# SPECIALTY LED



## ROE BP - 3.9MM - TRIANGLE

Don't be square! Bring these creative pieces to the stage or mix them with BP 3.9mm for a unique design.

- Processor: Evison
- Dimensions: 500x500 / 707.1 diagonal
- Tile frames made of magnesium alloy alongside ROE design process
- Each module within a panel stores calibration and operating parameters separately
- Available for all applications (Left, Right, Top, Bottom)

[DOWNLOAD SPEC SHEET >](#)



## ROE BM FLOOR - 4.7MM

This high-end floor panel brings creativity to the greatest concerts, TV studios, & trade shows.

- Processor: Brompton
- Dimensions: 609.6x609.6
- Strong anti-scratch surface
- Quick, easy, and creative set up
- 140° angle view for optimal use from close and afar

[DOWNLOAD SPEC SHEET >](#)



## INiFLED X-SERIES FLEX-2.9MM

The X-Series Flex offers versatile LED solutions for dynamic visual experiences.

- Processor: Novastar
- Dimensions: 500x500
- Two-way curvable LED panel
- Angle adjustment is easy and fast
- Bend angle can reach up to 20° with 5 incremental levels.
- Patented one-action locking mechanism with positioning pins.
- Magnetic connection from panel-to-panel.

[DOWNLOAD SPEC SHEET >](#)



# SPECIALTY LED

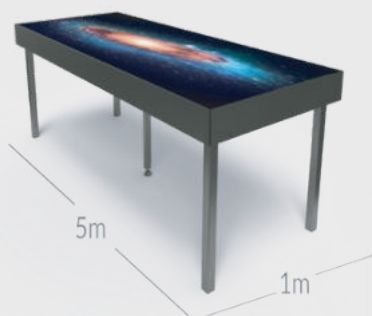


## ALUVISION - 2.5MM - MODULAR

The Aluvision frames offer a lightweight, sleek, easy-to-install, yet very solid end result.

- Processor: Novastar
- Dimensions: 496X496
- Quick, easy & tool-less installation
- Endless possibilities of assembly, including concave mounting
- Perfect application for trade shows with its fully modular building system

[DOWNLOAD SPEC SHEET >](#)



## UNILUMIN TABLE- 2.6MM

Taking your gala to the next level? Then allow your guests to enjoy the evening on high-res LED tables

- Processor: Novastar
- Dimensions: 5mx1m
- Can be assembled together for grand designs
- Multi applications available: welcome table, banquet, gala, experiential marketing

[DOWNLOAD SPEC SHEET >](#)

# LED CALCULATOR

---

Discover the Matrix Visual LED Calculator, your essential companion for precise LED installation planning. Empowering potential clients to accurately estimate their installation configuration, this cutting-edge tool ensures a flawless LED display setup.

# LED CALCULATOR

### LED SCREEN CALCULATOR

Determine your installation configuration below

INPUT

1

PRODUCT

SELECT CATEGORY

SELECT PRODUCT

2

UNITS

FEET

METERS

TILES

3

DIMENSIONS

WIDTH: 15ft

HEIGHT: 15ft

OVERVERRIDE

OVERVERRIDE

Introducing the Matrix Visual LED Calculator - your go-to tool for precision in LED installation planning. With this innovative resource, potential clients can easily determine their installation configuration estimate, ensuring a seamless and flawless LED display setup. Say goodbye to guesswork and hello to precision with the Matrix Visual LED Calculator.

GO TO CALCULATOR >

(805) 665-7005 | [tevens@matrixvisual.com](mailto:tevens@matrixvisual.com) | [www.matrixvisual.com](http://www.matrixvisual.com)



# CONTACT



Tom Evans - Director of Business Development, Matrix Visual



(805) 665-7005



tevans@matrixvisual.com



www.matrixvisual.com