

SPECIFICATIONS

Part Number	IL-RSS-IRS1.8
Pixel Pitch	1.81mm
Physical Density	302,311pixels/m²
LED Arrangement	3 IN 1 SMD
Module Resolution	128×128pixels
Module Dimension	232.8×232.8mm(9.17×9.17in)
Cabinet Resolution	256×256pixels
Cabinet Dimension	465.6×465.6×78mm (18.33×18.33×3.07in)
Cabinet Weight	8.7kg(19.18lb)
Brightness Level	800~1,000nits
Max Power Consumption	180w/panel
Ave Power Consumption	60w/panel
Viewing Angle Operating	120°/120°
Power Source Operating	100-240V AC 50-60Hz
Temperature Refresh	-10°C~+45°C
Rate Protecting Rating	1,000~3,840Hz(Configurable)
Signal Input Source	IP30 Composite, S-Video, Component, VGA, DVI, HDMI, SDI, HD SDI
Max Rigging Verification	7.44m(24.4ft) or 16panels RoHS, EMC, LVD, UL



Fixed Panel

Strong, Slim, Smart, Saving... S series has it all.

The panels are entirely modular with die-cast aluminum frame, and the PCM is convection cooled with efficient low heat radiation. Black SMD LED is for high contrast and high grey level, and the high refresh rate even at low brightness offers accurate yet vivid rendering that makes S series the stand-out next generation LED display of the future.

---



Rental Panel



High Grey Level



High Contrast



High Refresh



Silence



Low Power



Thin



Light Weight



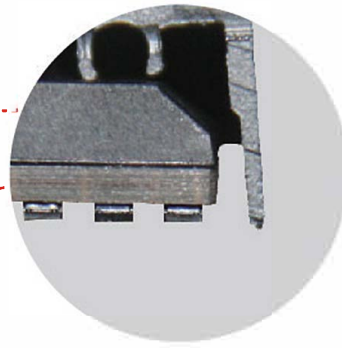
Rental/Fixed



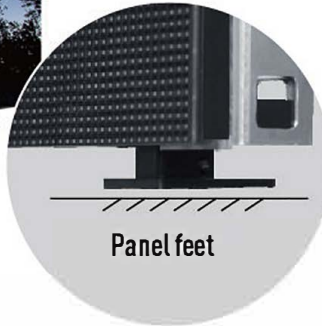
Fixed Panel

As an indoor electronic display, EMC standard is the key feature of S panels. As well, each module is integrated with memory chips to ensure best uniformity via forever calibration function.

---

**01****STRONG**

- Edge protector protects LED on edge against physical damage
- Stand of panel keeps LED on bottom away from floor scratching

**SMART****02**

- Front service optional for easier indoor screen wall application
  - Accurate positioning pin and vertical "Rolling Fast Lock" make screen building easy and flat
- 
- Separate and exchangeable power/control module; without tools
  - Each module is integrated with memory chips to ensure best uniformity via forever calibration function





**03****SAVING**

Power saving concept  
with low temperature design

**Cold Display**

**SLIM****04**

Seamless-precision die-cast  
aluminum frame



05

## STACKING AND HANGING SYSTEM OPTIONAL



Stacking System



User friendly system design, total solution  
package for stacking and hanging applications

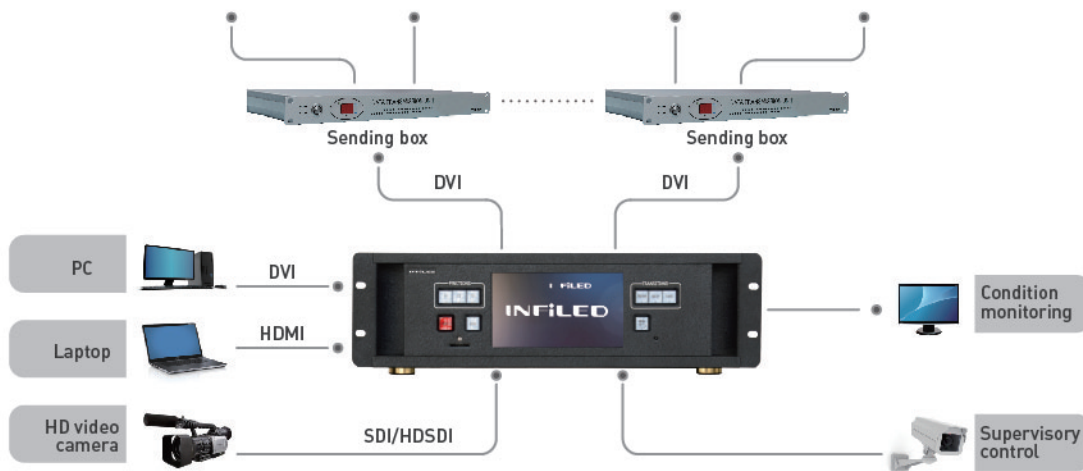


Hanging System



# 06 HD SCREEN SYSTEM SOLUTION

## • HD Screen



## CERTIFICATIONS

FC RoHS CE UL

