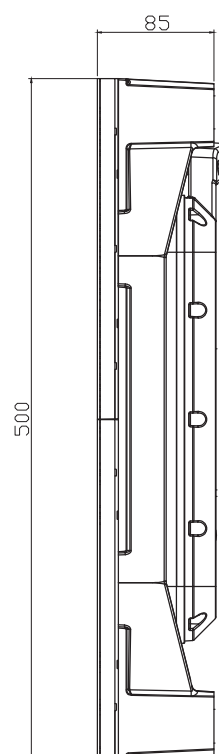
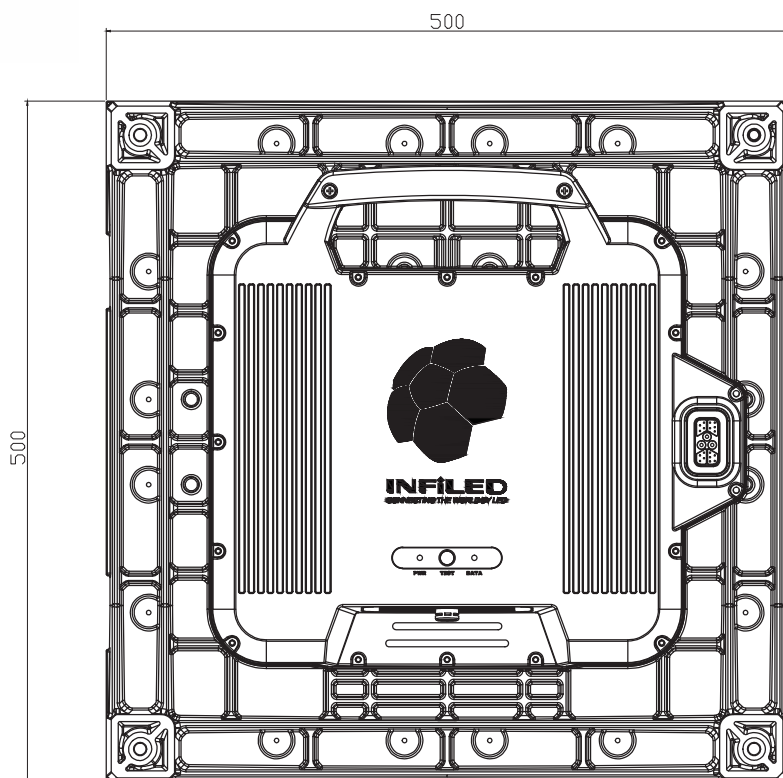


## SPECIFICATIONS

Part Number	IL-RSS-ORDF5	IL-RSS-ORDF7
Pixel Pitch	5.95mm	7.81mm
Physical Density	28,224pixels/m <sup>2</sup>	16,384pixels/m <sup>2</sup>
LED Arrangement	3 IN 1 SMD	3 IN 1 SMD
Module Resolution	42×42pixels	32×32pixels
Module Dimension	250×250mm(9.84×9.84in)	250×250mm(9.84×9.84in)
Cabinet Resolution	84×84pixels	64×64pixels
Cabinet Dimension	500×500×85mm (19.69×19.69×3.35in)	500×500×85mm (19.69×19.69×3.35in)
Cabinet Weight	16kg(35.27lb)	16kg(35.27lb)
Brightness Level	1,500~3,000nits	1,500~5,000nits
Max Power Consumption	300w/panel	300w/panel
Ave Power Consumption	100w/panel	100w/panel
Viewing Angle	110°/110°	110°/110°
Operating Power Source	100-240V AC 50-60Hz	100-240V AC 50-60Hz
Operating Temperature	-10°C~+45°C	-10°C~+45°C
Refresh Rate	1,920Hz(Configurable)	1,000~2,400Hz(Configurable)
Protecting Rating	IP65	IP65
Max Load-bearing	2,500kg/m <sup>2</sup> (3 times safety factor)	2,500kg/m <sup>2</sup> (3 times safety factor)
Signal Input Source	Composite, S-Video, Component HDMI, SDI, HD SDI, VGA, DVI	Composite, S-Video, Component HDMI, SDI, HD SDI, VGA, DVI
Verification	EMC, ETL, LVD	EMC, ETL, LVD



# DANCE FLOOR



**INFiLED's 2<sup>nd</sup>** generation dance floor panel takes the standard of floor screens to a whole new level. Specially designed frames in different sizes allow for super fast and easy levelling and alignment, and integrated power and data connections result in reliable, fast and clean cabling of your screen. The panels themselves have integrated motion sensors that allow you to build interactive content that will respond to people's movements on the screen. The LED modules are magnetic for easy servicing and have a high contrast, anti-reflective and anti-slip surface which result in perfectly uniform blacks and video every time, even at wide viewing angles. Our interactive dance floor features a fully IP65 design (when connected) and is able to carry loads of up to 2,500kg/m<sup>2</sup> with three times safety factor, allowing you to drive even the biggest SUV-class cars onto the floor with absolute peace of mind.



Touch Screen



Quick Leveling



Magnet



Adjustable Feet



IP65



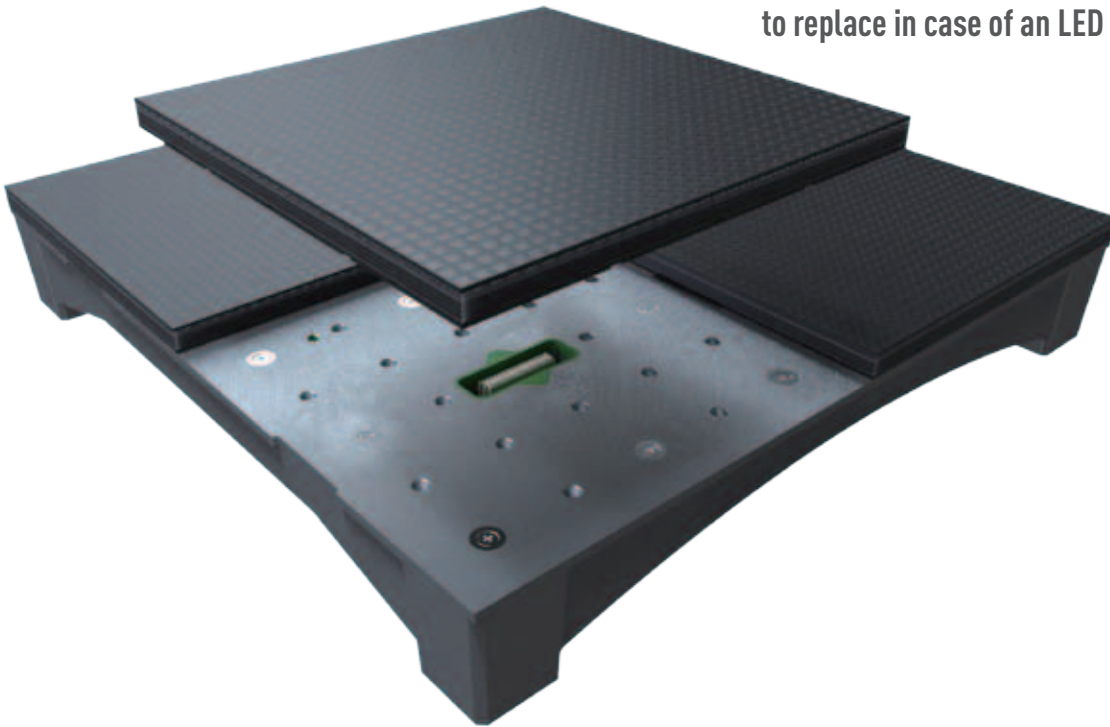
Load-bearing



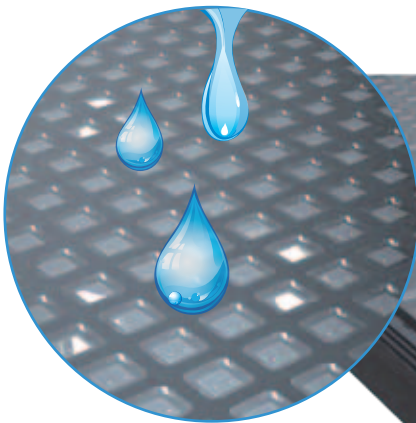
**01**

## MAGNET MODULE

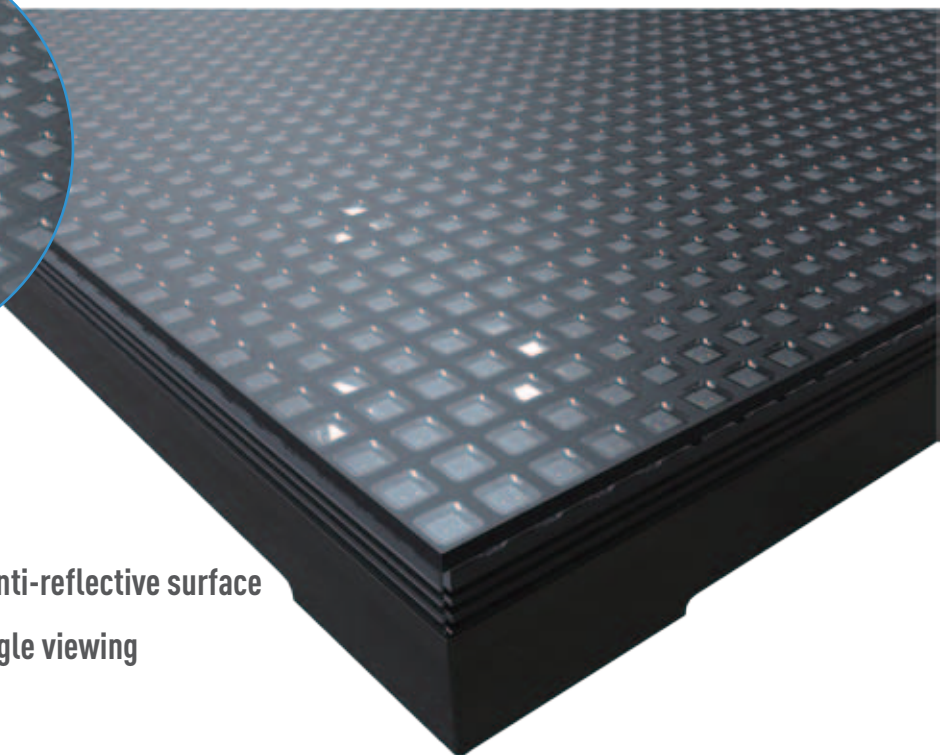
Magnetic LED modules that are very easy to replace in case of an LED failure



## MAGNETIC CONNECTION

**02**

- Matte anti-slip and anti-reflective surface
- Uniform and wide-angle viewing
- IP65

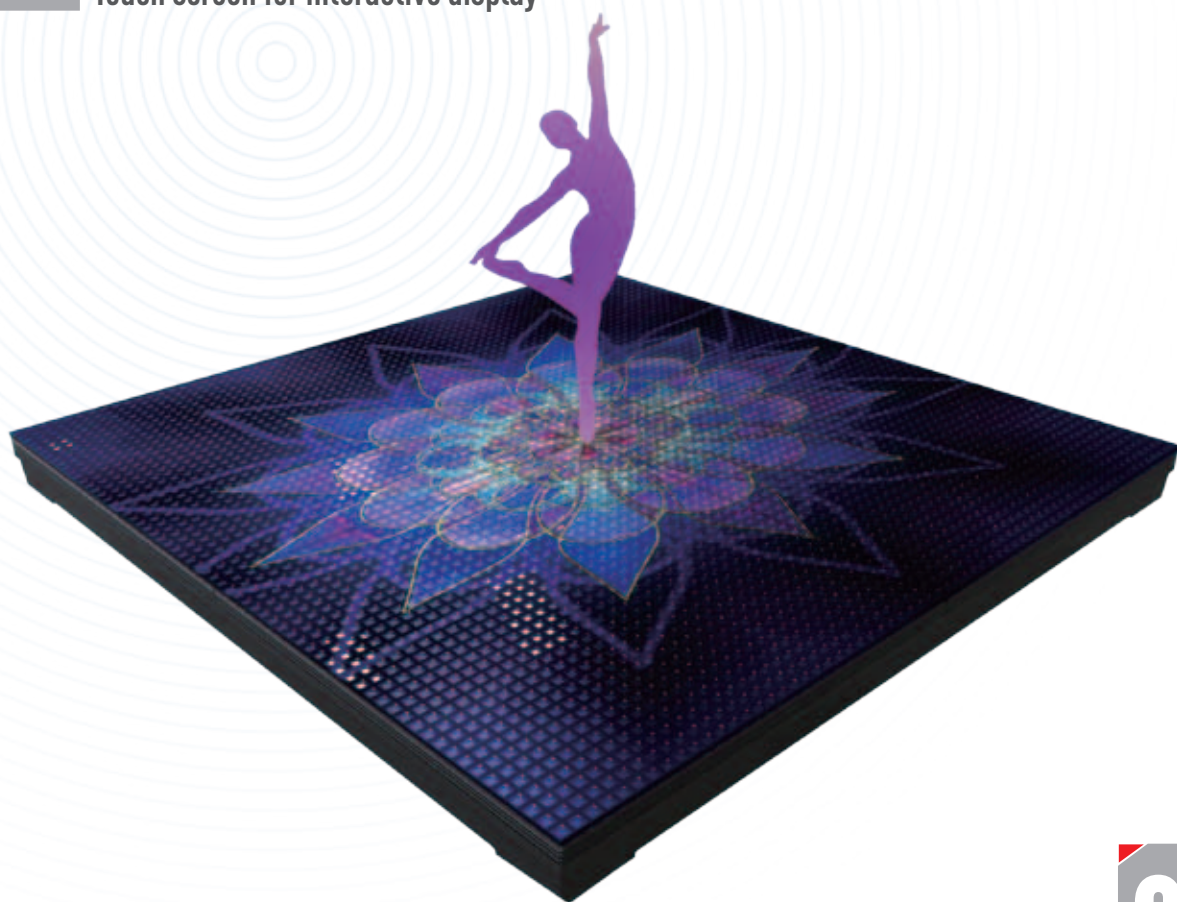




03

## TOUCH SCREEN

Touch screen for interactive display



## LOAD-BEARING

04

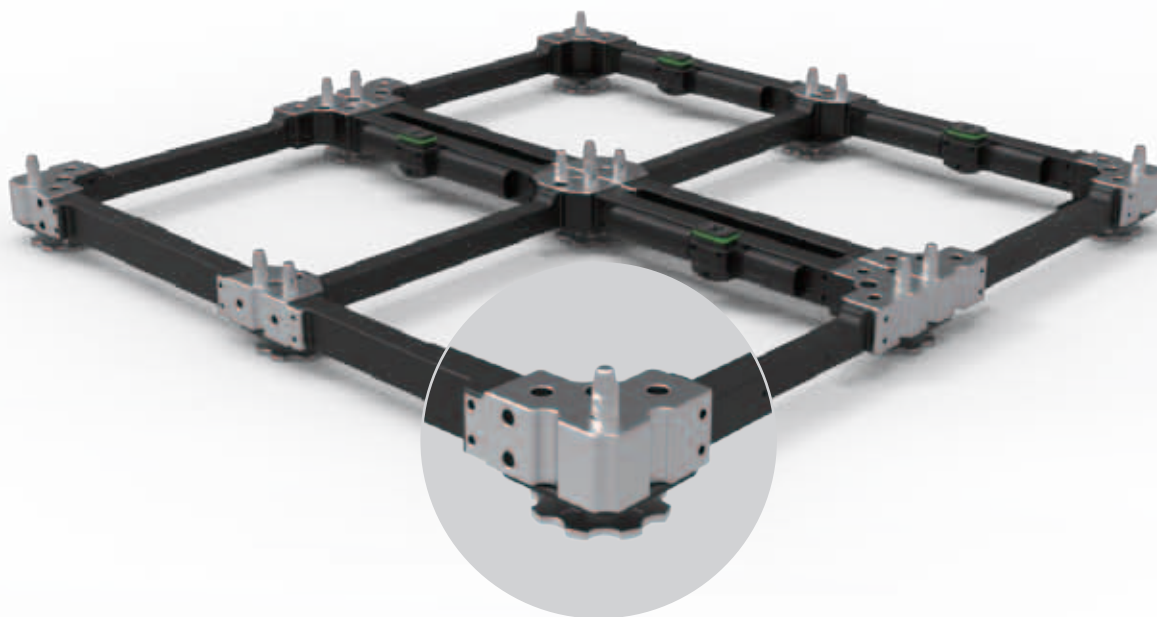
Able to carry a load of 625kg per cabinet/2,500kg per m<sup>2</sup> with 3 times safety factor



## 05 EASY AND ULTRA-FAST TO BUILD A SCREEN WITH MULTIPLE SIZE FLOOR FRAMES. E.G: 2X2 FRAME

First frame: only need to adjust 6 frame corners to level out for 4 cabinets.

Sequential frames: only need to adjust 3 corners to level out per 4 cabinets.



## BUILD THE FLOOR FRAME FIRST, THEN JUST DROP IN THE CABINETS AND THEY ARE AUTOMATICALLY CONNECTED

06

Cable free solution is optional by integrated  
connector plugging

